

---

Integrated Partnership for  
Regional Emergency Management  
in Metro Vancouver

# Today's Agenda @ CWMA

- Overview of IPREM
- Regional Disaster Debris Management
  - Terms of Reference
  - Tasks Identified
    - Pre-Event – Plan
    - Pre-Event – Prepare & Mitigate
    - **Post-Event – Planning**
    - **Post-Event – Execution**
- Next Steps and Questions



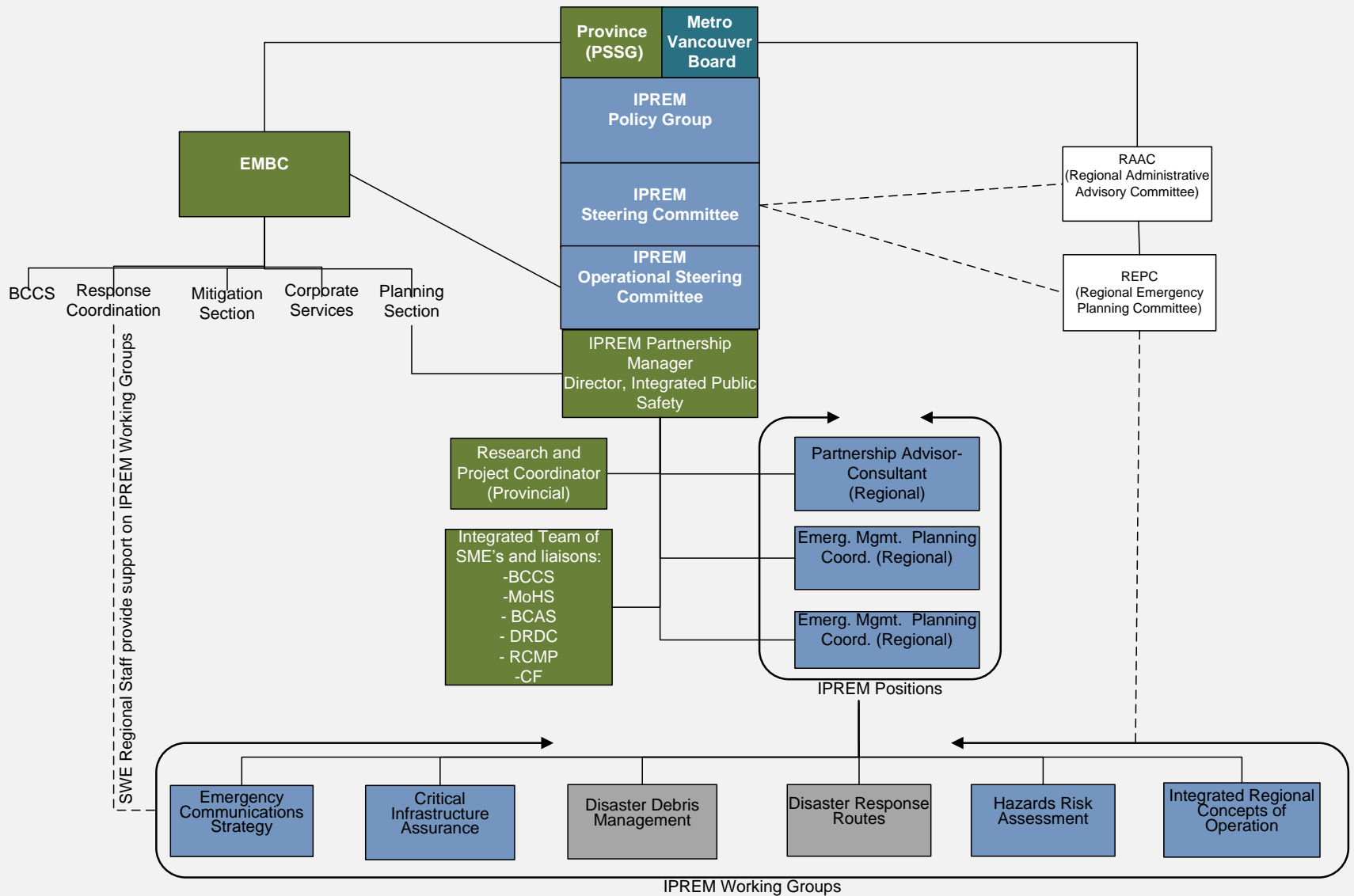
# IPREM

- Mission

*To develop and deliver a coordinated seamless regional emergency strategy supported by an integrated concept of emergency operations, strategic priorities and supporting plans*

- An intergovernmental entity created to improve Emergency Management at all levels of government in the Lower Mainland
- Recognizes Emergency Management is a shared responsibility







# Regional Disaster Debris Management Plan

*Disaster debris is excessive amounts of mixed materials produced by catastrophic events exceeding the capacity of local operations' day-to-day recycling and waste removal services.*

# The Need to Focus on Recovery

- Examples from around the world:
  - 9/11; Haiti; Katrina; New Zealand; Japan
  - Still undertaking cleanup and recovery operations
  - Recovery is a long term undertaking
- Goals of RDDM:
  - To assist in moving forward IPREM's Vision:

*A Disaster Resilient Region where all levels of Government work together seamlessly and amongst key stakeholders*
  - To shorten clean-up and recovery period; get back to new normal
  - To effectively and efficiently allocate resources for recovery efforts across the region



# Identified Planning Levels

(First 4 are within Scope of Plan)

- Guiding Principles
- Overall Approach
- Goals and Strategies
- Actions/Roles and Responsibilities
- Implementation Tasks/Operations
- Site Specific Work/Specifications



# Working Group

## (Representing Broader Stakeholders)

| SECTOR                                | ORGANIZATION   |
|---------------------------------------|--|
| Municipal Engineers                   | Regional Engineers Advisory Committee                        |
| Municipal/Regional Emergency Planners | Regional Emergency Planning Committee                        |
| Non Government, Private Sector        | BC Pacific Chapter of SWANA                                  |
| Post Secondary                        | BC Post Secondary Emergency Planners                         |
| Regional Government                   | Metro Vancouver  |
| Provincial Government (1 rep)         | Ministry of Environment<br>Emergency Management BC           |
| Federal Government (1 rep)            | Environment Canada<br>Public Safety Canada                   |
| Public Health                         | Regional Health Authority<br>(MHO or Environment Assessment) |



# Regional Disaster Debris Management Plan

- *Framework* to be used by local, regional and provincial authorities to guide the *storage, sorting and disposal of disaster debris* that exceeds the regular capacity of the regional waste disposal system
- Part of the regional recovery phase to be activated following a catastrophic event
- Will confirm/propose/define the roles, relationships and authorities for local, regional and provincial governments regarding removal and disposal of disaster debris – for both the short (temporary) and long term recovery timeframes



# Overview of Tasks

- **PLAN** – Governance model, structure, authorities, identify how this plan fits within emergency management framework
- **PRE-EVENT – PREPARATION & MITIGATION** - Outlines preparation activities, including testing and exercising
- **POST-EVENT - PLANNING** – Information gathering, situational overview and plan development, while local authorities conduct first response activities
- **POST-EVENT - EXECUTION** – Within overall regional recovery phase, disaster debris program approved and operationalized

**Draft plan framework completion June 30, 2011**



# RDDM Plan Tasks

## Plan (Development)

- Research and Draft the Plan Framework
- Include consideration of
  - How the Plan fits into Overall Recovery Plans
  - Governance and authority structure for the RDDM Plan
    - Today, short and longer term
  - Funding model (ongoing and event specific)
  - Plan approval process



# RDDM Plan Tasks

## Pre-Event

### Preparation & Mitigation

- Develop and analyse potential disaster scenarios
- Develop inventory of debris management and disposal resources
- Conduct a gap analysis and determine options
- Make recommendations for improvements e.g. damage prevention

# RDDM Plan Tasks

## Pre-Event

### Preparation & Mitigation cont.

- Seek pre-approval for the temporary relaxation of permits for land use and debris management options and confirm authorities
- Identify infrastructure improvement and capital project plans requiring large amounts of debris
- Co-ordinate an education program and regular schedule for training and exercises to test the Plan with stakeholders as part of an overall communication plan
- Update the Plan as required



# RDDM Plan Tasks

## Post-Event Planning

- Activate Plan
- Gather intelligence, impact assessment, situational awareness as to type/volume/location of debris, establish priorities
- Coordinate integration of resources based on current conditions
- Check-in with other emergency response and recovery plans, ensure cooperation



# RDDM Plan Tasks

## Post-Event

### Planning cont.

- Develop a regional perspective of cross-jurisdictional issues, economic/policy priorities, gaps and overlaps
- Determine if RDDM is an “add-on” to local/regional/provincial recovery program(s) or a separate new program
- Review pre-identified debris disposal and re-use options, initiate approval process where permits required
- Obtain Program approval



# RDDM Plan Tasks

## Post-Event Execution

- Execute the RDDM Plan
- Enter into Agreements to engage resources
- Establish temporary and permanent debris storage/processing sites
- Undertake debris removal and disposal process in coordination with other local authority and regional recovery plans, renewal/new capital projects



# RDDM Plan Tasks

## Post-Event

### Execution cont.

- Provide on-going management and review of operations activities
- Monitor and report
- Program complete
  - Report out to local authorities and Province
  - Deactivate Plan

# Proposed Activation of RDDDM Plan

(Key Recommendations # 2)

The **Regional Disaster Debris Management (RDDDM) Plan** could be activated one of two ways:

- 1) *By local authorities when they find themselves overwhelmed by the quantity of solid waste to manage post-disaster*
- 2) *By the province in order to facilitate an efficient regional disaster debris management strategy*



# Develop Resource Inventory

(Key Recommendations # 9)

- a) Federal resources
- b) Provincial resources
- c) Local authority / regional resources
- d) Private sector and other resources within the region

THEN Address gaps in resources (land, equipments, skilled workforce, funding)

# Resource Allocation

(Key Recommendations # 11)

## **ESTABLISH PRIORITIES**

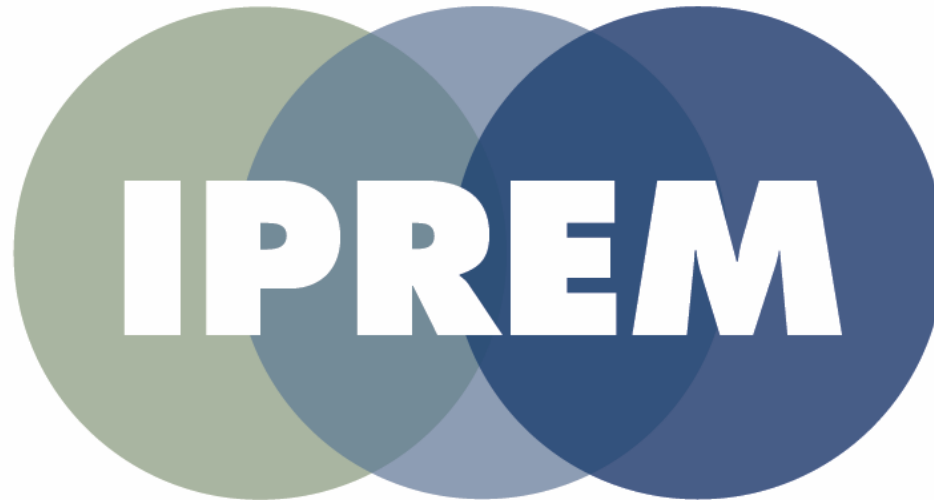
- Mutual aid agreements between local authorities
- Use of private sector
- Agreements that the Province has beyond Metro Vancouver
- Reallocation of local and regional resources/authorities

# Proposed Next Steps

- Solicit feedback
- Complete Final Draft Plan
- Prepare exercise for the fall – focus on how to deal with priorities and resource allocation
- Commence approval process

**QUESTIONS AND COMMENTS**





---

Integrated Partnership for  
Regional Emergency Management  
in Metro Vancouver