



# Centre for Sustainable Excellence

## Granville Island – City of Vancouver

October 27, 2011

# Granville Island



# Granville Island



# Granville Island



# Granville Island



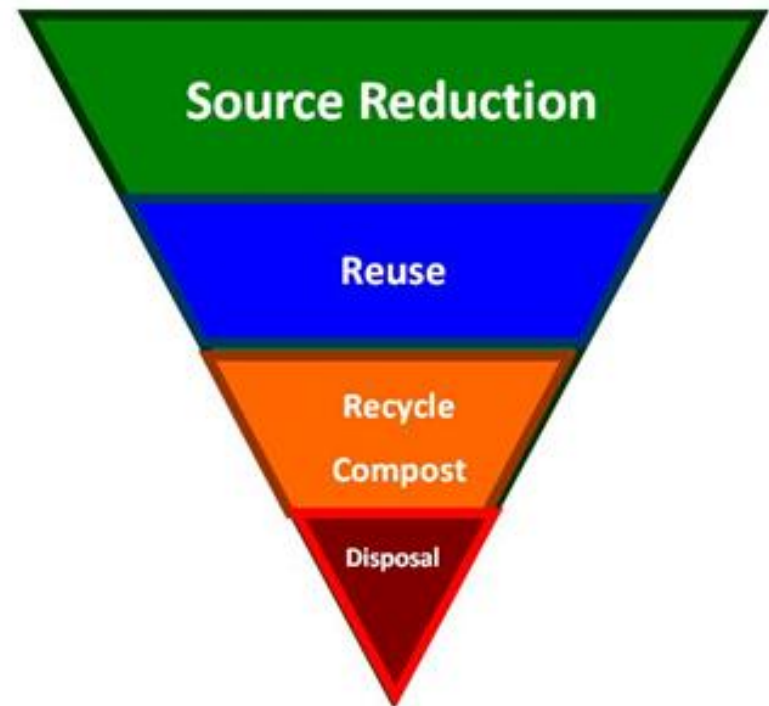
# Waste Management Challenges

- 17 separate agreements with recycling, product steward and waste vendors
- Underdeveloped equipment infrastructure
- Operational inefficiencies
- Minimal tenant outreach and feedback



# Waste Management Solution

- Pollution Prevention Hierarchy
  - Rethink!
  - Reduce (at source)
  - Reuse
  - Recycle/Compost
  - Disposal



# Waste Management Solution

- Phase One
  - Create a single-vendor solution
  - Develop RFP to maximize materials diverted
  - Oversee hauler selection
  - Monitor hauler performance



# Waste Management Solution

- Phase One
  - Initial outreach to tenant groups and BIA
  - Organics collection changes
  - Survey to assess barriers and behaviour



# Tenant Outreach - Organics

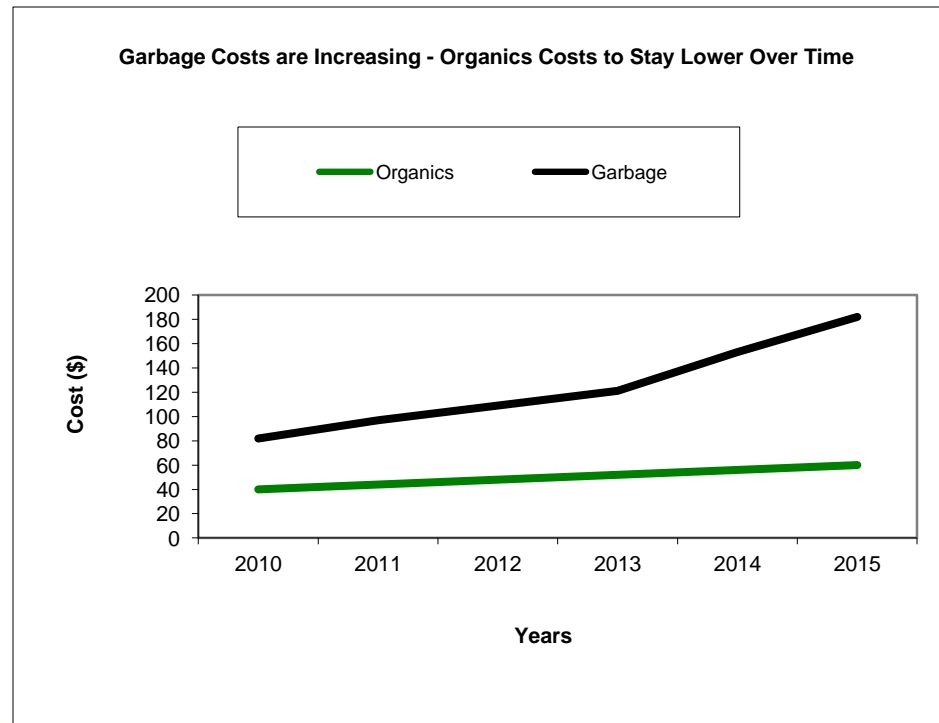
- Benefits from Capturing Organics
  - Reduce garbage
  - Reduce greenhouse gas emissions
  - Produce compost - a valuable resource to complete the nutrient cycle
  - SAVE MONEY...



# Tenant Outreach - Organics

## ■ SAVE MONEY

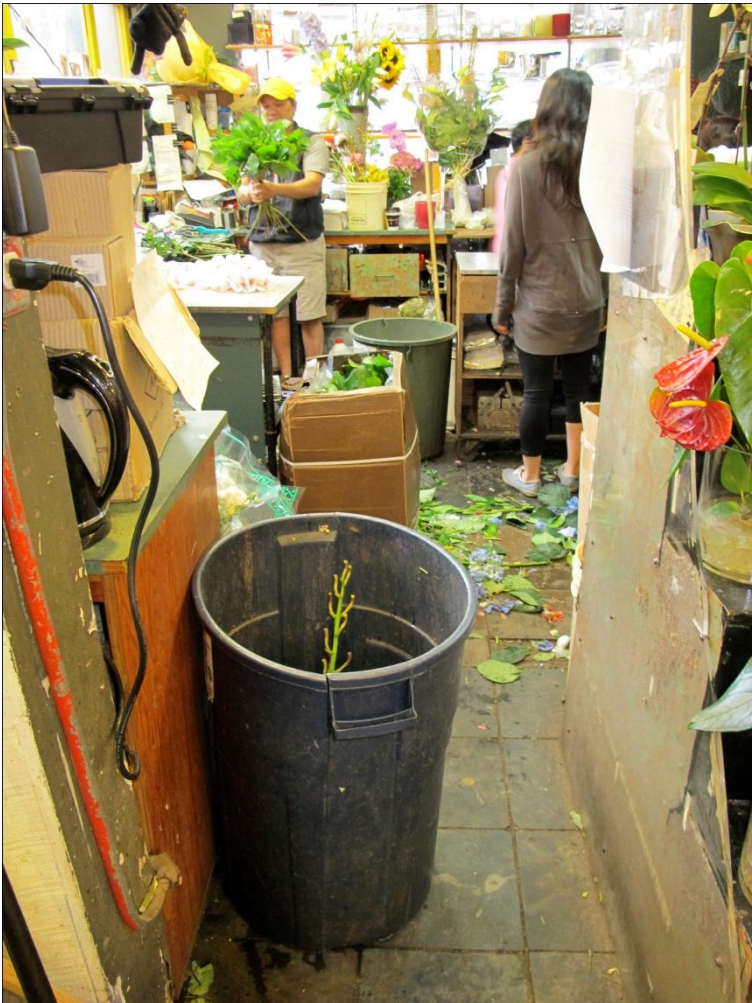
- Organics tipping fees are currently half the cost of garbage, and are expected to stay lower over time
- Garbage costs are projected to increase



# Tenant Outreach - Organics



# Tenant Outreach - Survey



# Centre for Sustainable Excellence



- Zero Waste Planning
  - Equipment enhancement including midscale composting, balers
  - Procurement policy changes
  - Zero Waste Public Stations
  - Ongoing tenant education and feedback



- Energy - renewable energy and conservation programs



- Transportation – public transit expansion and bike commuter stations



- City collaboration as part of Greenest City Initiative
  - 10 Actions
  - Dovetails with CMHC Sustainability Plan
  - Opportunities to leverage resources and outreach



## ORGANICS COLLECTION TOTES

### INSTRUCTIONS FOR USE

WHAT CAN BE COLLECTED IN ORGANIC TOTES

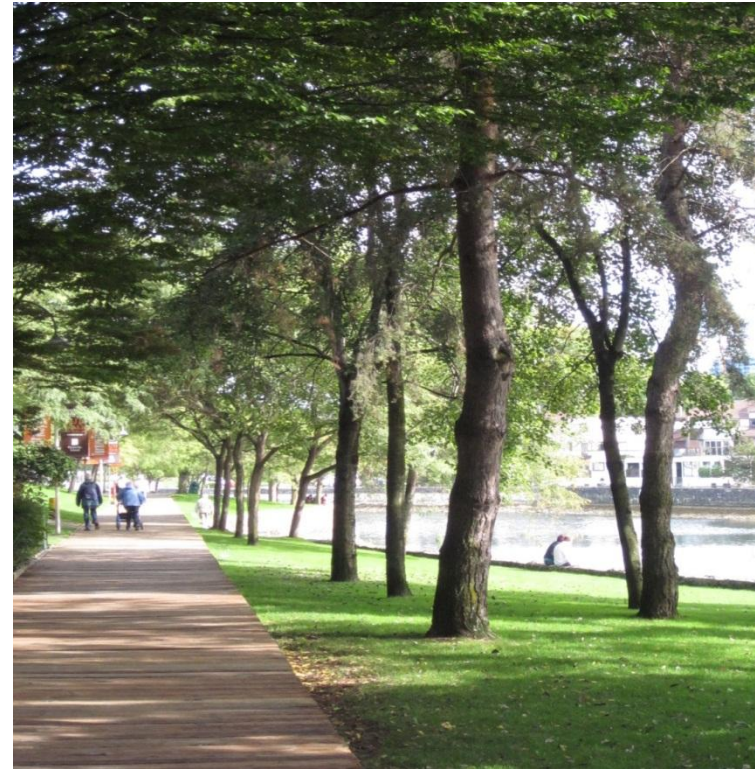
**YES!**  
Add these items:

				
<b>YES</b> Floral and yard trimmings	<b>YES</b> Fruit, vegetables, coffee grounds / filters, teabags	<b>YES</b> Shellfish, meat, bones	<b>YES</b> Dairy, egg, bread, pasta, dough, rice	<b>YES</b> Food-soiled paper - napkins, wood stir sticks

**NO! Do not include:**

				
<b>NO</b> Grease or liquids	<b>NO</b> Wire, twist ties, rubber bands, cork, foil	<b>NO</b> Containers - cartons, plastics and styrofoam	<b>NO</b> Plastic - grocery bags, netting, packaging/wrap	<b>NO</b> Coffee cups - styrofoam and plastic-lined paper

- Future Phases
  - Ongoing implementation of sustainability elements
  - Leverage stakeholder collaboration to maximize sustainability efforts
  - Walking/bicycle tour of Granville Island and downtown





**Bert Monesmith**  
**[bmonesmith@eba.ca](mailto:bmonesmith@eba.ca)**  
**250.212.1419**

**Thank You!**