

An aerial view of Safeco Field baseball stadium during a game. The field is green with brown dirt bases and pitcher's mound. The stadium is filled with spectators. In the background, the city skyline and another stadium (PNC Field) are visible. The sky is clear and blue. The text "Scott Jenkins Vice President of Ballpark Operations" is overlaid in white on the field.

Scott Jenkins

Vice President of Ballpark Operations



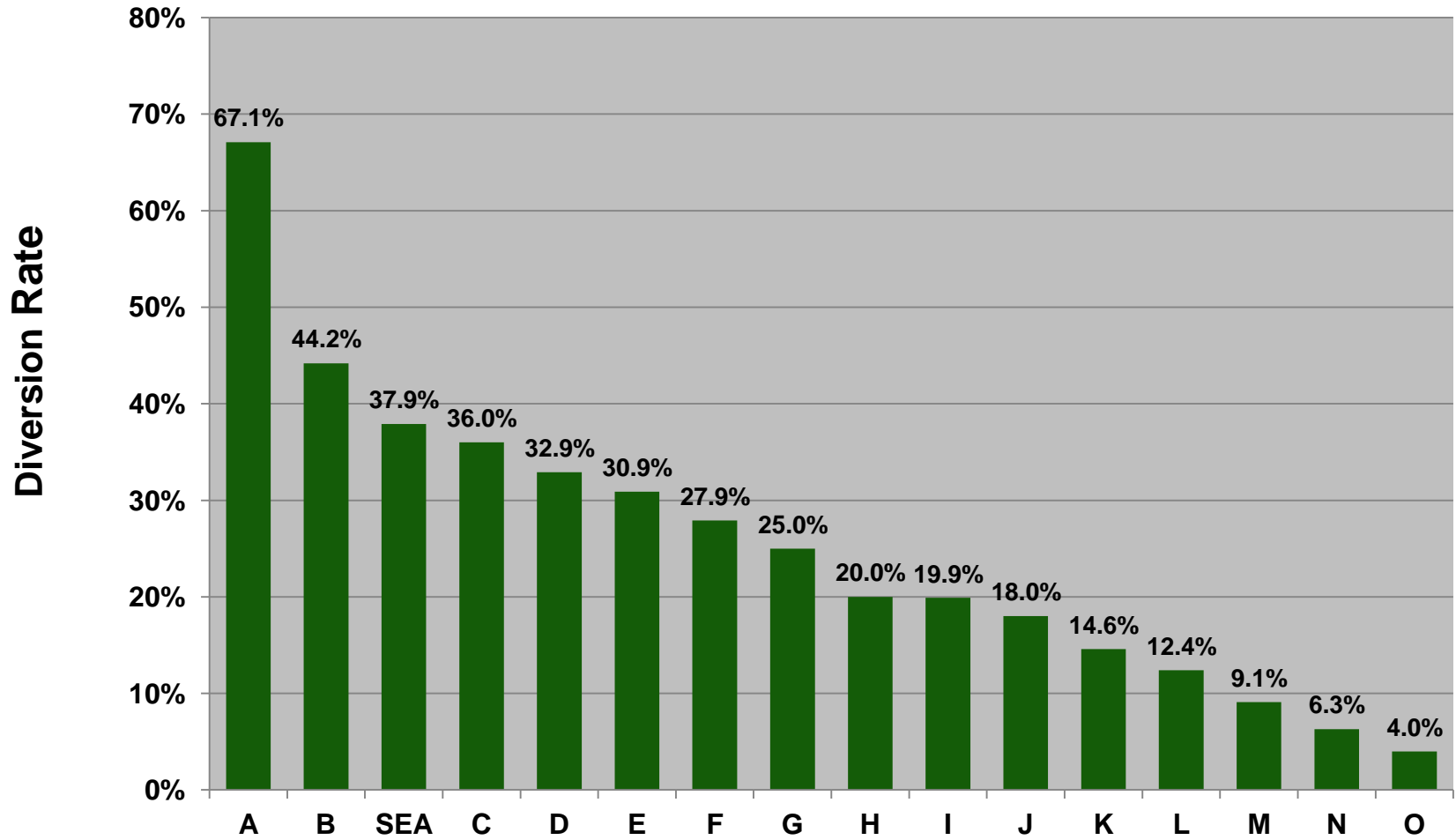
Opportunities

- **Trajectory of Green**
- **Develop Culture of Conservation**
- **Brand Value**
- **Bottom Line Savings**
- **Metrics – Benchmark Performance**
- **Recycling, customer touch point**
- **Influence Supply Chain, procurement**
- **Transportation, key GHG issue**

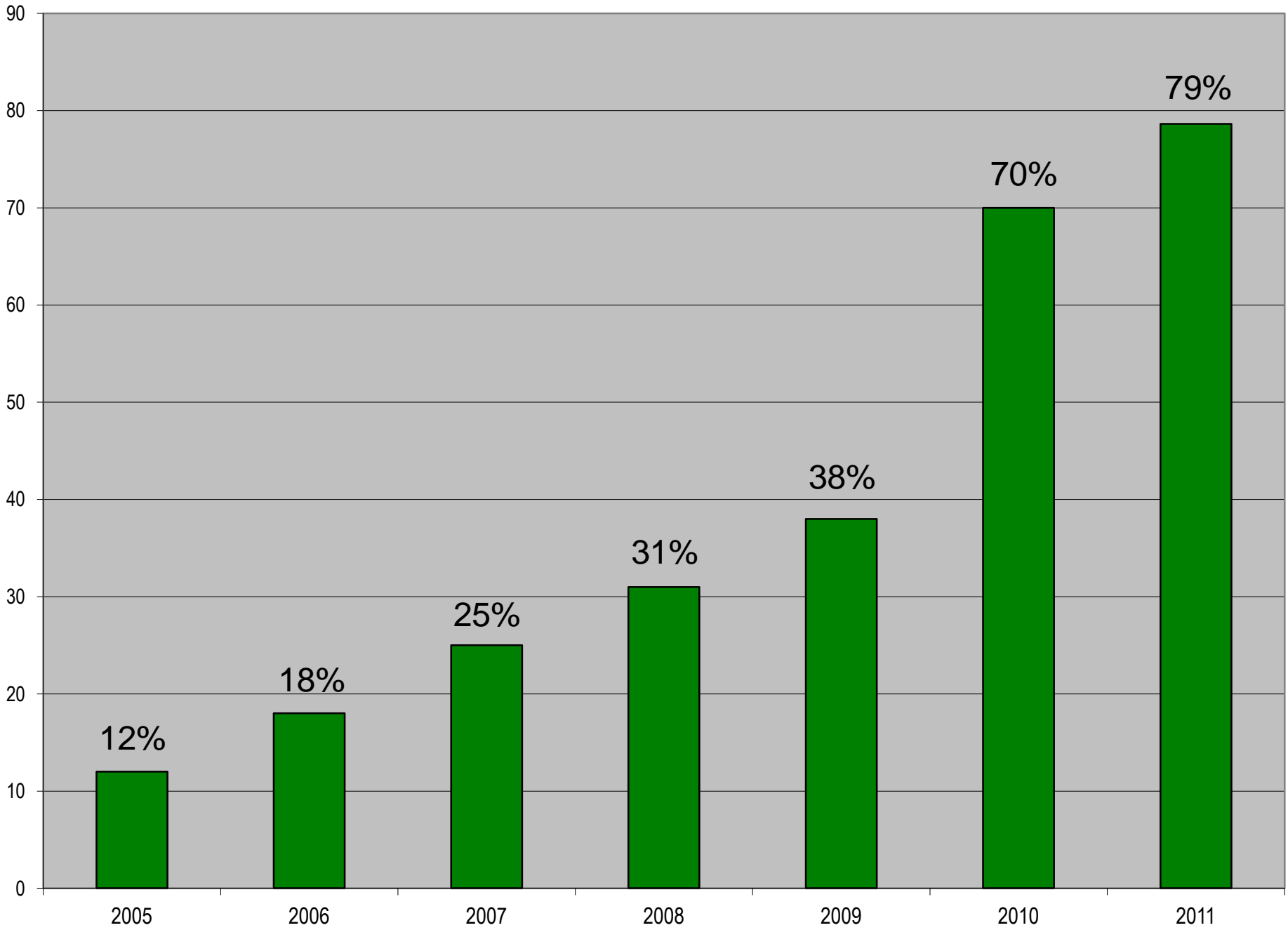
GREEN
SPORTS
ALLIANCE

GreenSportsAlliance.org

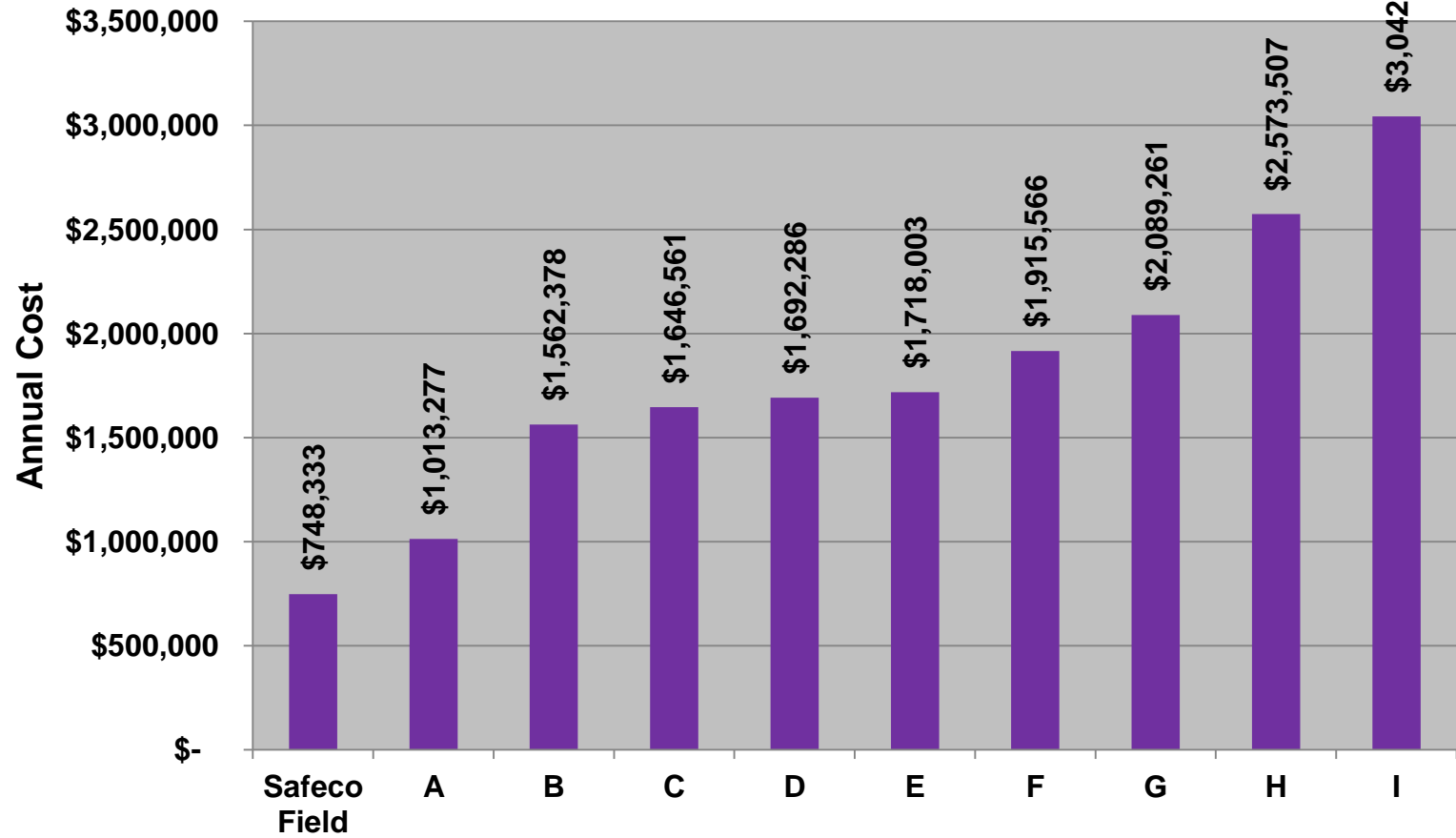
2009 MLB Recycling



Annual Recycling Rate



EPA Energy Star MLB Ballpark Data Annual Energy Cost



We've Switched To Compostable Service Ware



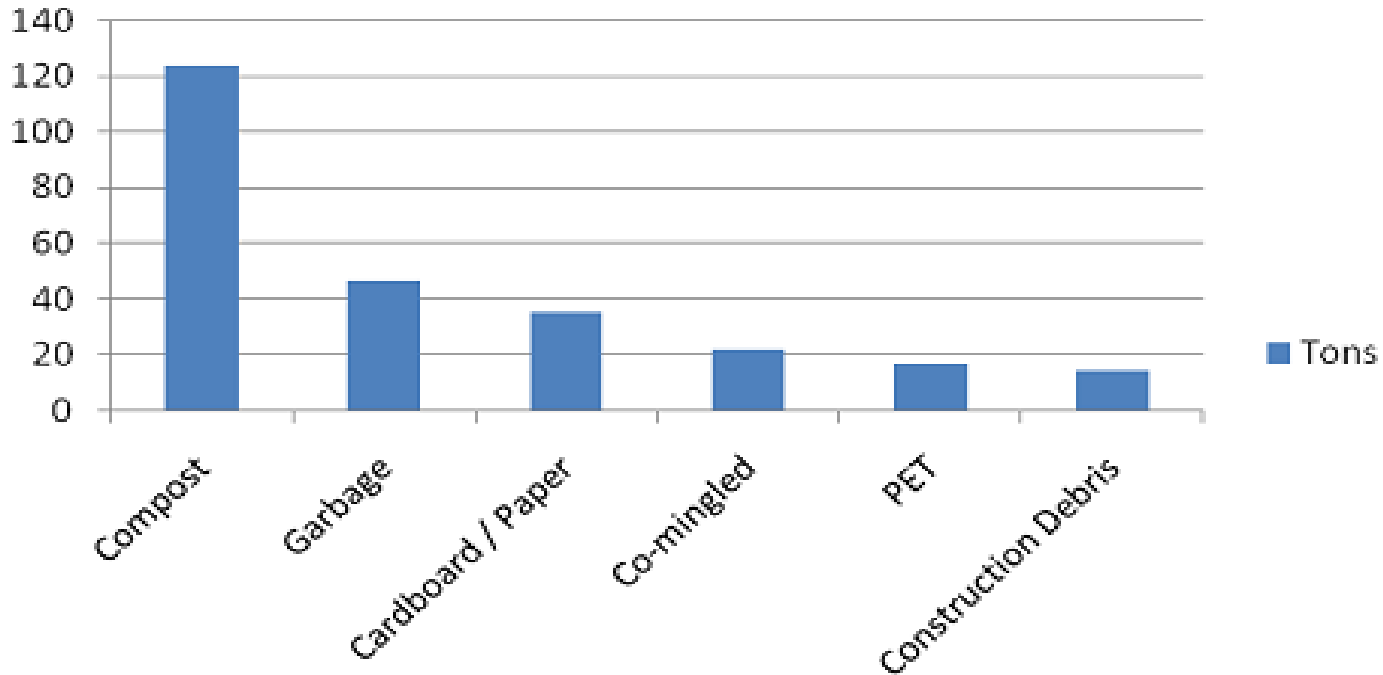
It's Not Garbage Anymore!

Default to Recycling



Recycling Rate = 81.9%

2010 Waste Streams (Apr - May)



Compost	123.75
Garbage	46.92
Cardboard / Paper	35.33
Co-mingled (glass, plastic, metal containers)	22.09
PET (water, soda, beer bottles)	16.95
Construction Debris	14.43

Total Waste = 259.47 Tons

Recyclables = 212.55 Tons

Product is not for human consumption.



Washington State
Recycling Association

CONGRATS TO SAFECO FIELD
2011 RECYCLER OF THE YEAR!

The background of the advertisement is a photograph of a baseball field, showing the green grass and brown dirt. In the upper center, a baseball is positioned within a four-pointed star shape, with the star's points extending towards the corners of the frame.

SAFECO FIELD SOIL

Peanut shells today, Safeco Field Soil tomorrow!



Thanks to our fans, Safeco Field keeps over 250,000 pounds of recoverable food, compostables and yard waste out of the landfill annually while Cedar Grove Composting transforms it into this bag of earth-friendly soil used to grow beautiful Northwest gardens.

This bag contains a special blend of compost enhanced with small amounts of bark, perlite and organic fertilizer.

Best for outdoor use as container planting media or for mulch around a bush or plant.

Product is not for human consumption

JOIN THE GREEN TEAM!

Energy Savings

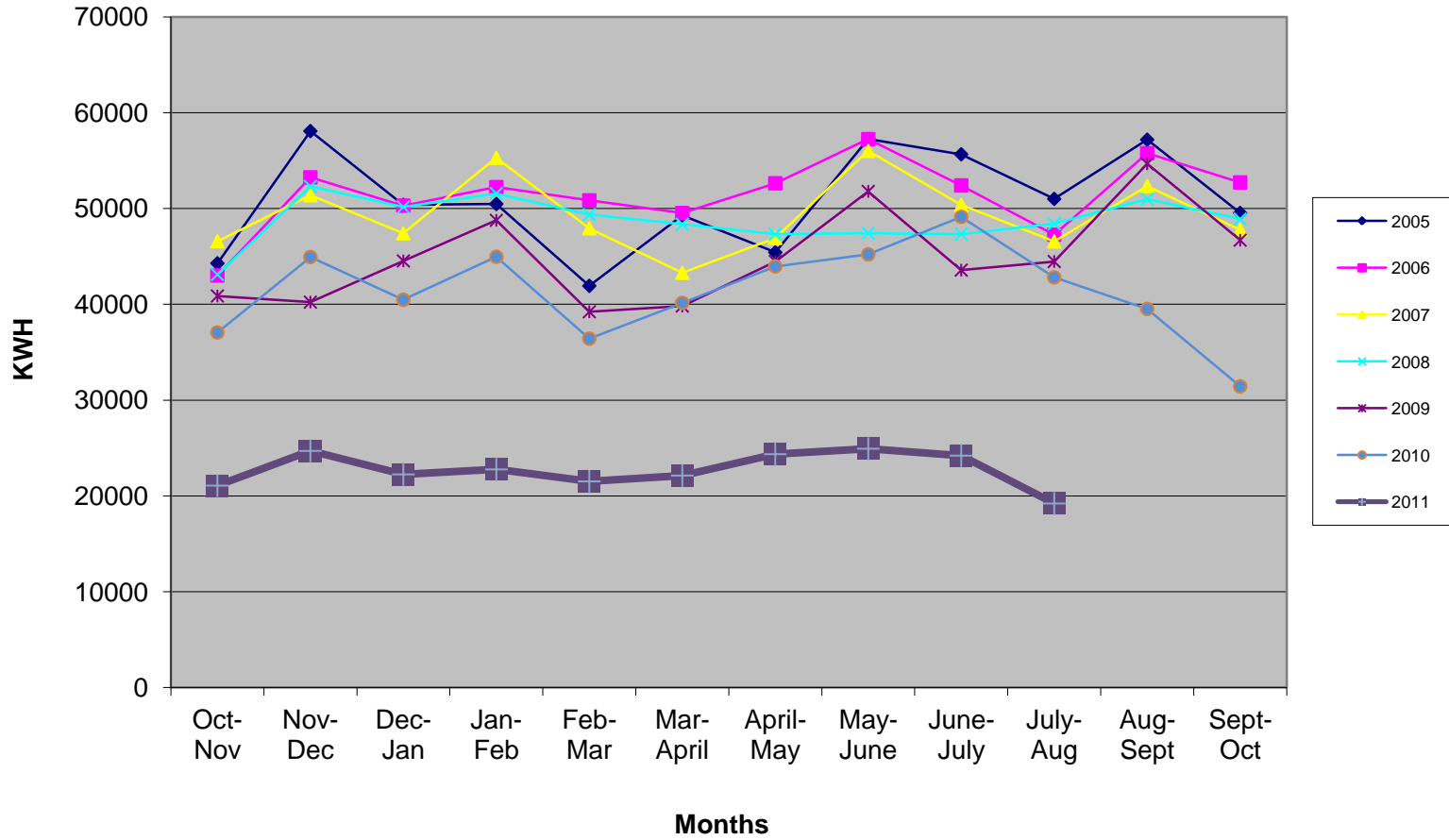
	2006	2007	2008	2009	2010
Electric (KWh)	13,194,750	11,694,997	11,448,675	10,977,335	10,747,263
Natural Gas (Thems)	305,552	194,574	206,928	170,650	182,355
Water (CCF)	26,898	27,653	24,154	24,793	20,500
Sewer (CCF)	21,747	22,431	19,027	19,412	14,300

	Cost				
	2006	2007	2008	2009	2010
Electric (KWh)	\$ 755,389	\$ 562,694	\$ 598,198	\$ 513,440	\$ 655,583
Natural Gas (Thems)	\$ 349,135	\$ 248,474	\$ 231,080	\$ 211,580	\$ 153,316
Water (CCF)	\$ 94,572	\$ 90,735	\$ 80,767	\$ 104,395	\$ 95,794
Sewer (CCF)	\$ 143,492	\$ 166,265	\$ 148,220	\$ 169,724	\$ 128,414
TOTAL	\$ 1,342,588	\$ 1,068,168	\$ 1,058,265	\$ 999,139	\$ 1,033,107
\$ SAVED	\$ -	\$ 274,420	\$ 284,323	\$ 343,449	\$ 309,481

4 yr Savings \$ 1,211,672



KWH Usage - Parking Garage

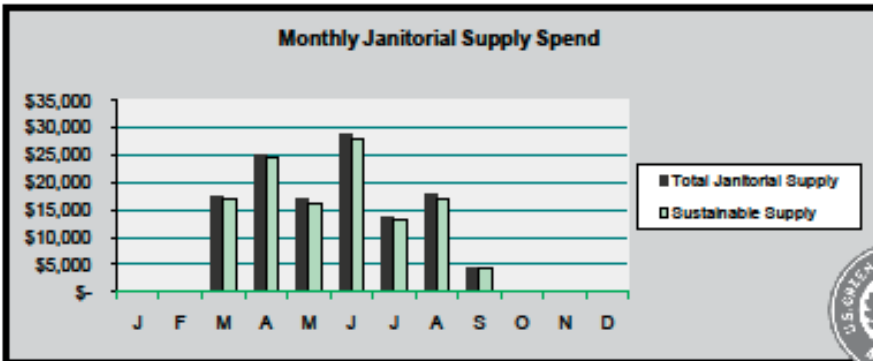
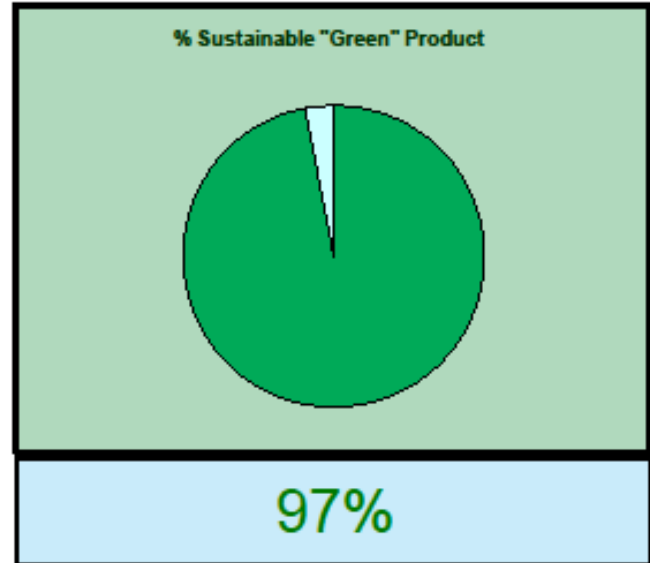




Sustainable Cleaning Product Dashboard



Month	Total Jan/San Spend	Sustainable Product Spend	% Sustainable Product
Jan-10	\$ -	\$ -	-
Feb-10	\$ 147.00	\$ 147.00	100%
Mar-10	\$ 17,383.00	\$ 17,020.28	98%
Apr-10	\$ 24,971.99	\$ 24,357.99	98%
May-10	\$ 17,050.37	\$ 16,359.57	96%
Jun-10	\$ 28,890.80	\$ 27,838.35	96%
Jul-10	\$ 13,500.88	\$ 13,193.88	98%
Aug-10	\$ 17,674.78	\$ 16,908.26	96%
Sep-10	\$ 4,545.04	\$ 4,545.04	100%
Oct-10	\$ 322.16	\$ 322.16	100%
Nov-10	\$ 87.18	\$ 87.18	100%
Dec-10	\$ 303.46	\$ 303.46	100%
2010	\$ 124,876.66	\$ 121,083.17	97%



Project
Safeco Field

prepared by:
Kevin Getman
Sanitary Maintenance Consultant
206-941-1159

* Tool for tracking cleaning product spend activity for projects pursuing LEED for Existing Buildings: Operations & Maintenance EQ Credit 3.3 and CIMS-GB certification

GREEN
SPORTS
ALLIANCE

GreenSportsAlliance.org